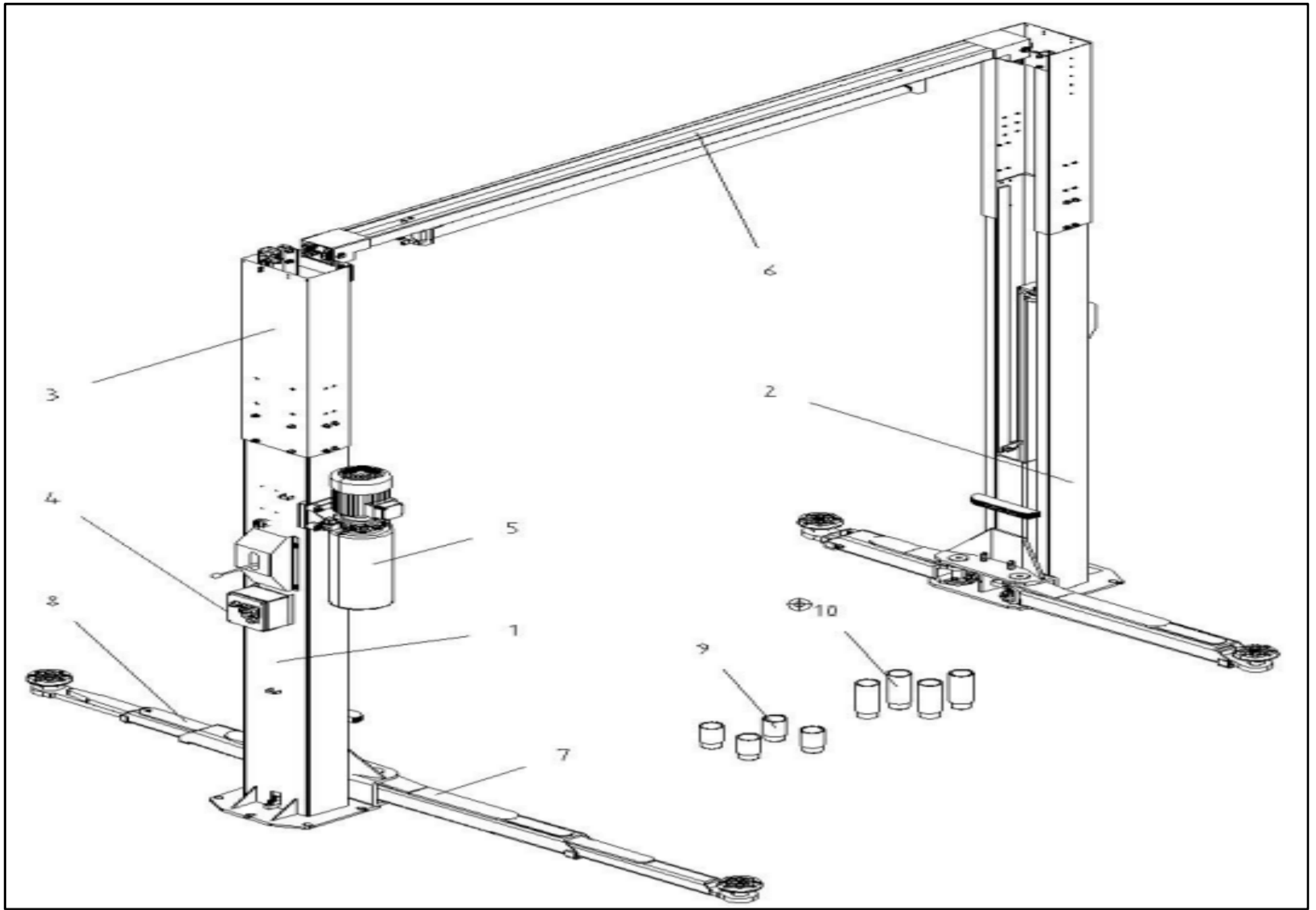
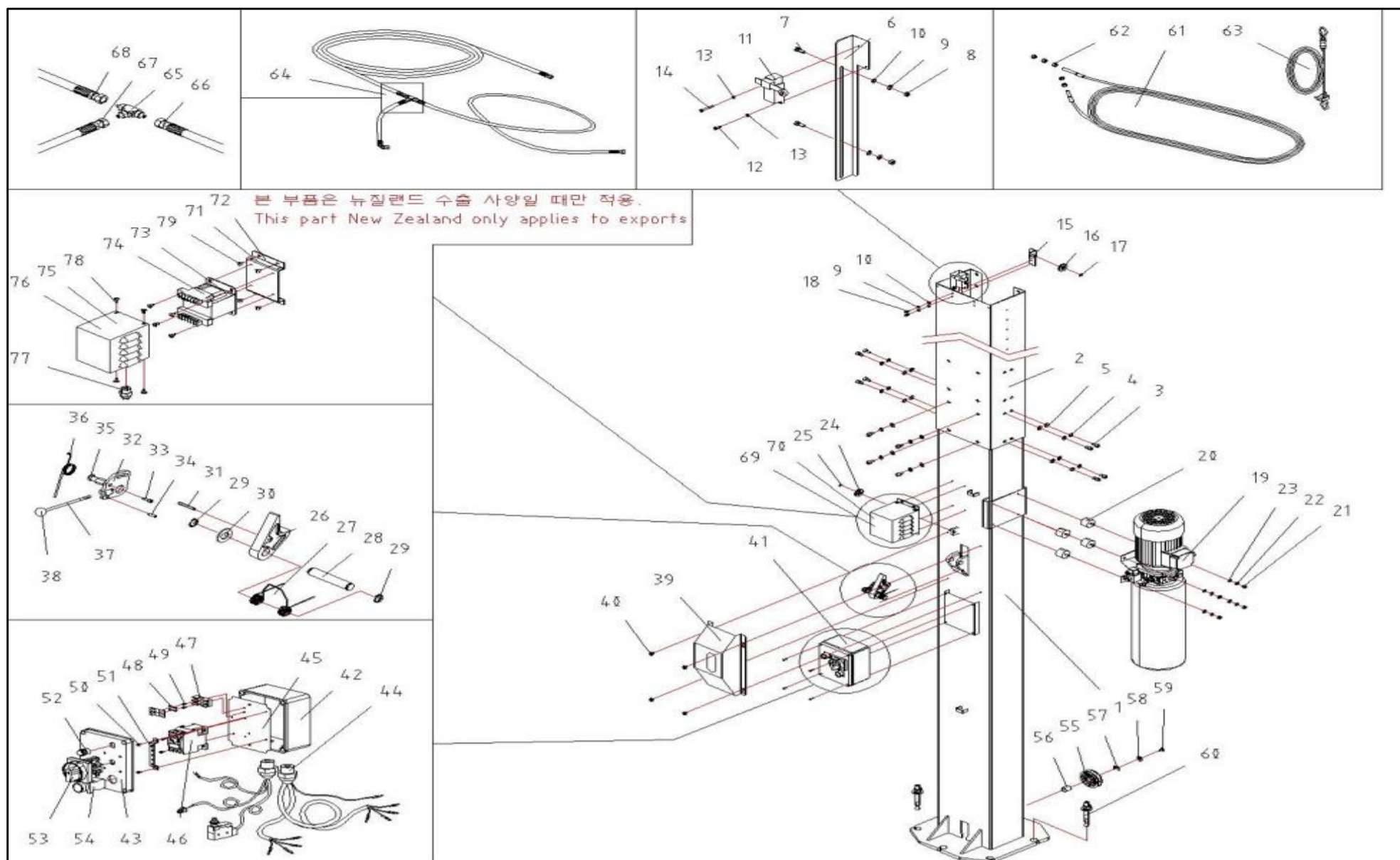


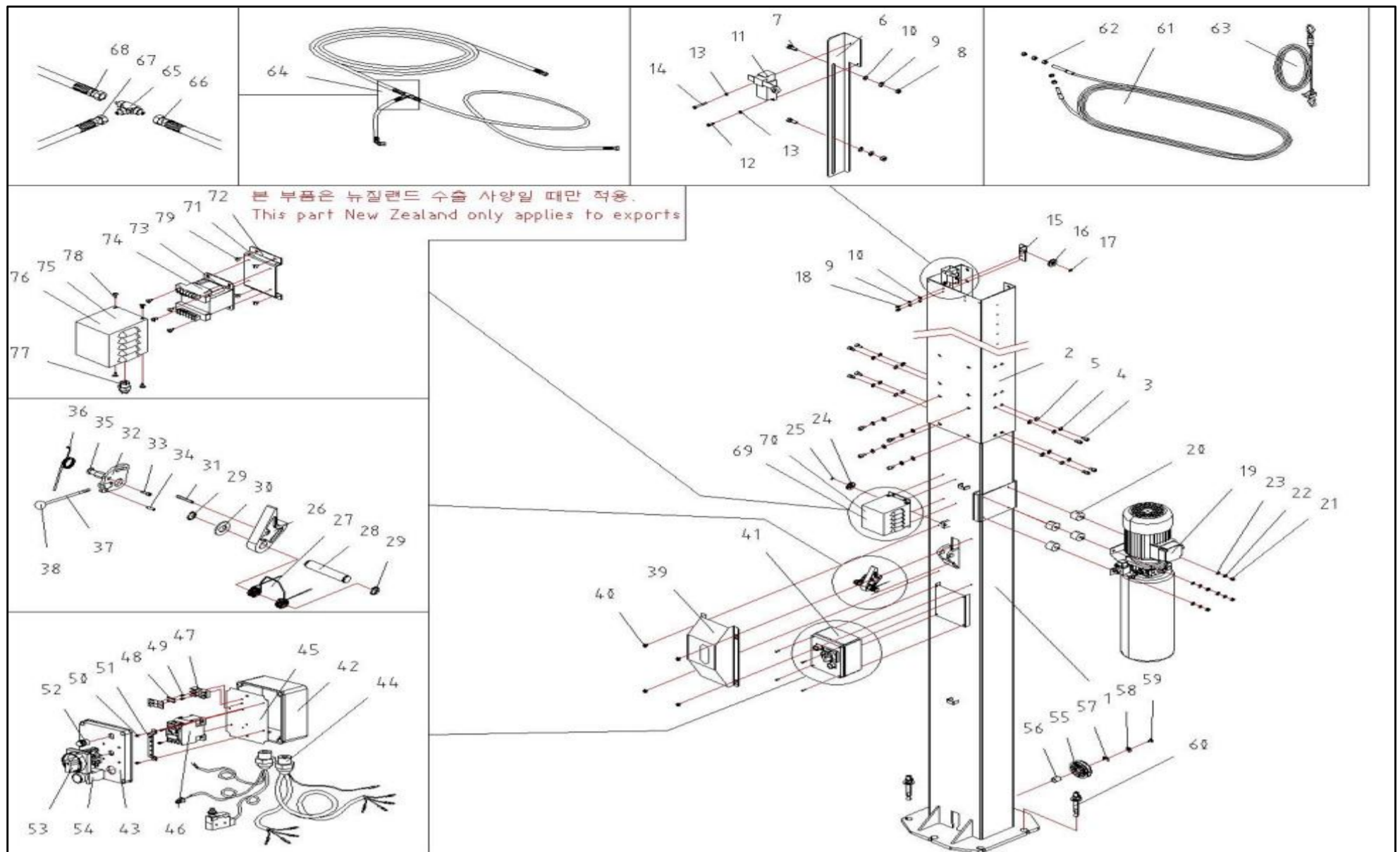
# HL-26K PART-BOOK



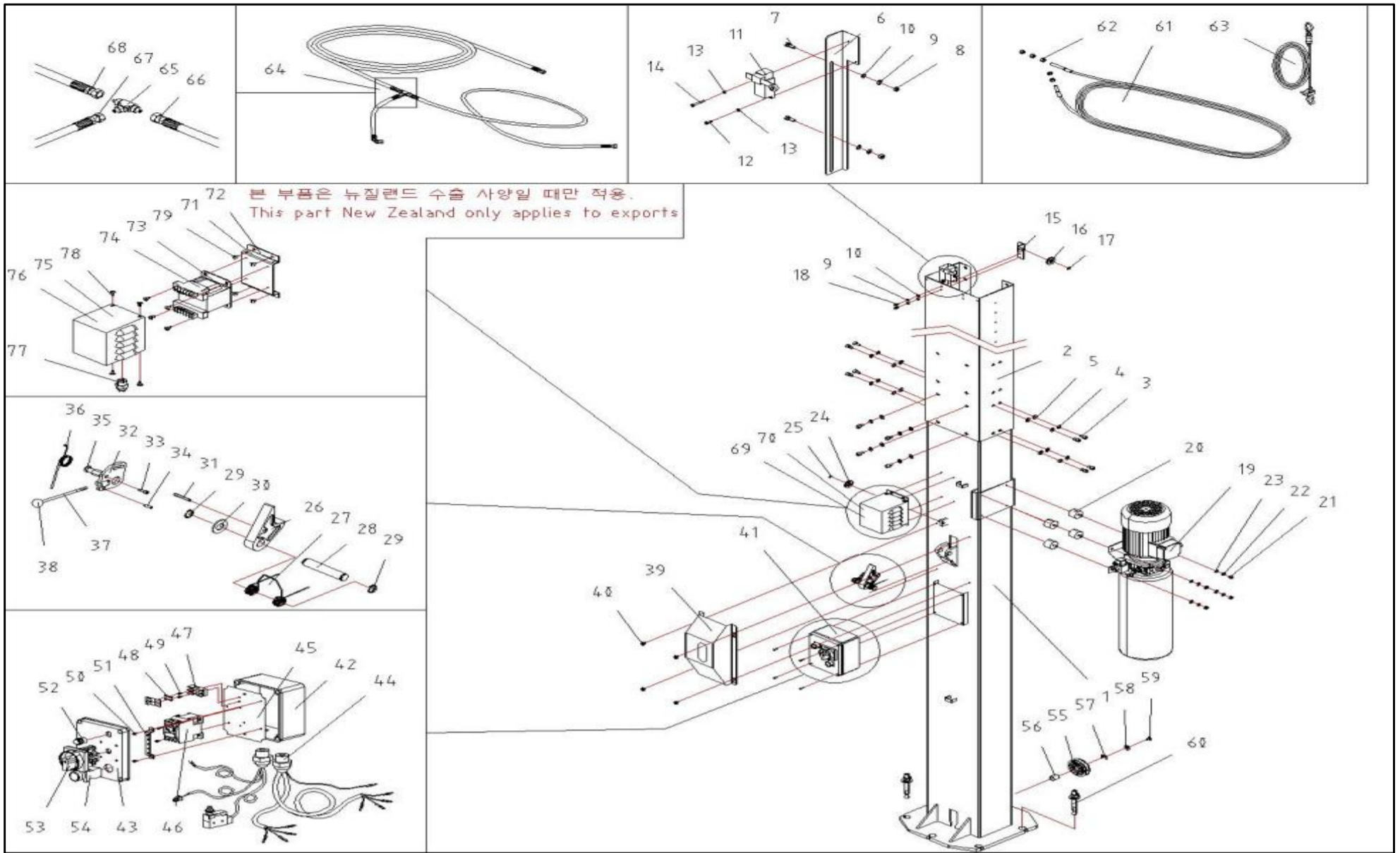
번호	품명(한글)	품명(영문)	수량	품번	비고및변경사유
NO.	PART NAME 총조립품(수동-LEVER타입)	PART NAME	Q'TY	ITEM NO.	NOTE
1	구동기둥	MAIN POST	1	26K03500	
2	종동기둥	POST	1	26KR3100	
3	연결기둥	POST EXTENSION	2	26K80110	
4	콘트롤박스조립품(수동)	CONTROL BOX ASS'Y	1	26K06900	
5	파워팩	POWER PACK ASS'Y	1	26K99_0	
6	상부지지빔조립품	CROSS BEAM ASS'Y	1	26K40000	
7	긴아암조립품	LONG ARM ASS'Y	2	26K20000	
8	짧은아암조립품	SHORT ARM ASS'Y	2	26K30000	
9	조정볼트아답타2단(1)	HEIGHT BOLT 2ND-1	4	26D80120	
10	조정볼트아답타2단(2)-옵션	HEIGHT BOLT 2ND-2(OP)	4	26D80130	



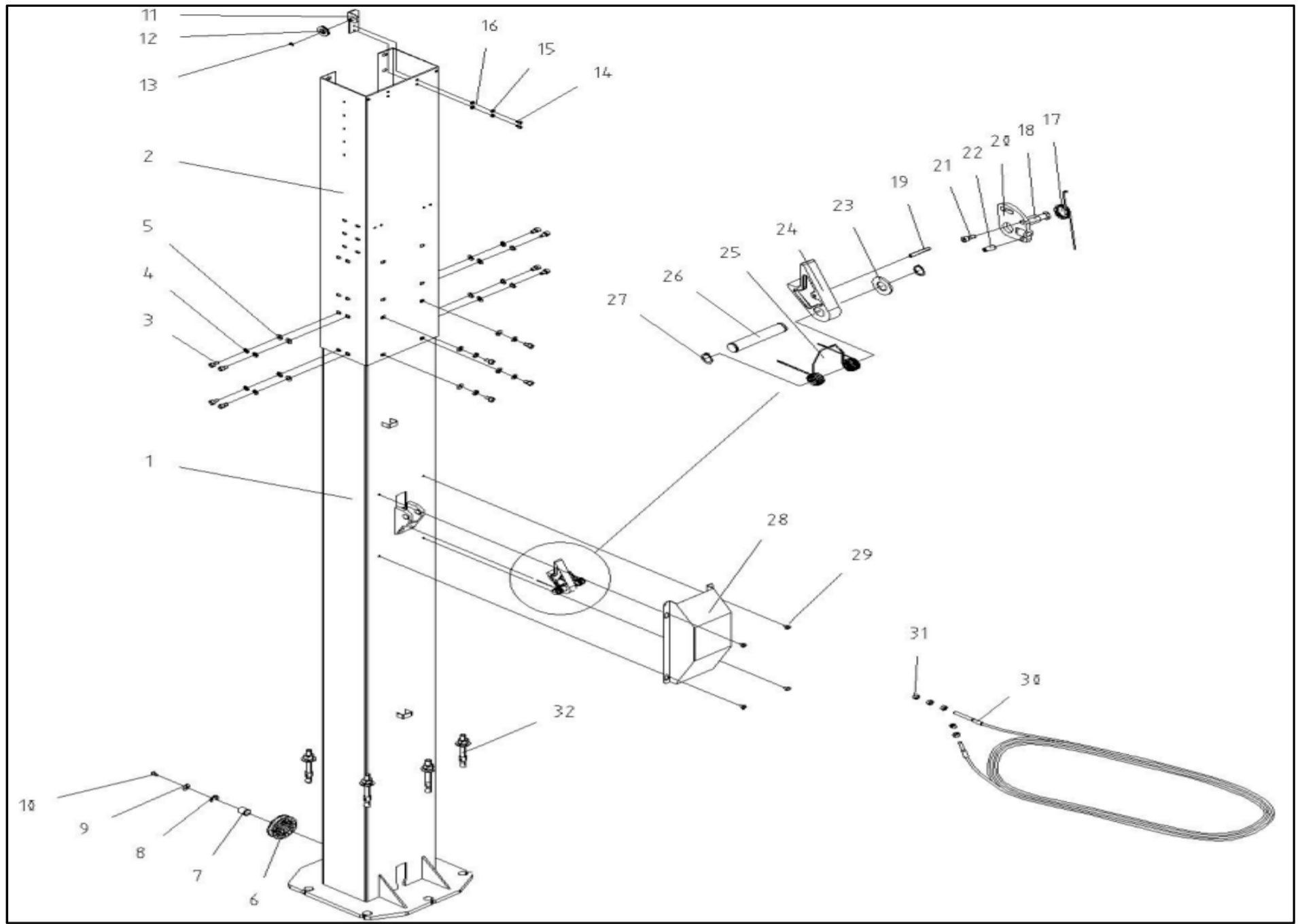
번호	품명 (한글)	품명 (영문)	수량	품번	비고 및 변경 사유
NO.	PART NAME 총조립품(수동-LEVER타입)	PART NAME	Q'TY	ITEM NO.	NOTE
1	구동기둥	MAIN POST	1	26K03500	
2	연결기둥	POST EXTENSION	1	26K80110	
3	렌치볼트	WRENCH BOLT	12	WBM1015W	
4	스프링와샤	SPRING WASHER	12	WSM10	
5	평와샤	PLAIN WASHER	12	WPM1003	
6	리미트스위치브라켓	LIMIT SWITCH BRACKET	1	26C06220	
7	렌치볼트	WRENCH BOLT	2	WBM0615	
8	육각너트	HEX NUT	2	HNM06	
9	스프링와샤	SPRING WASHER	2	WSM06	
10	평와샤	PLAIN WASHER	2	WPM06	
11	리미트스위치	LIMIT SWITCH	1	RME-8108	
12	둥근머리십자볼트	ROUND HEAD BOLT	1	RHCBM0412	
13	스프링와샤	RHCBM0412	2	WSM04	
14	둥근머리십자볼트	ROUND HEAD BOLT	1	RHCBM0430	
15	록커와이어시브상부브라켓	ROCKER WIRE SIEVE BRACKET	1	26K06510	
16	록커와이어시브	ROCKER WIRE SIEVE	2	26K06120	
17	E-링	E-RING	2	SN-E08	
18	렌치볼트	WRENCH BOLT	2	WBM0610	
19	파워팩	POWER PACK ASSEMBLY	1	26K99_0	
20	양볼트방진고무	VIBRATION PROOF RUBBER	4	26K01010	
21	육각너트	HEX NUT	4	HNM08	
22	스프링와샤	SPRING WASHER	4	WSM08	
23	평와샤	PLAIN WASHER	4	WPM08	
24	록커와이어시브	ROCKER WIRE SIEVE	2	26K06120	
25	E-링	E-RING	2	SN-E08	
26	록커주조품	LOCK BLOCK	1	26K06111	
27	록커지지스프링	LOCK SPRING	1	26K06140	
28	록커축	LOCK SHAFT	1	26K06100	
29	스냅링	CIRCLIP	2	SN-CS20	
30	평와샤	PLAIN WASHER	1	WPM20	
31	스프링핀	SPRING PIN	1	SPIN0620	
32	록커레버고정판주조품	LEVER BODY	1	26K06086	



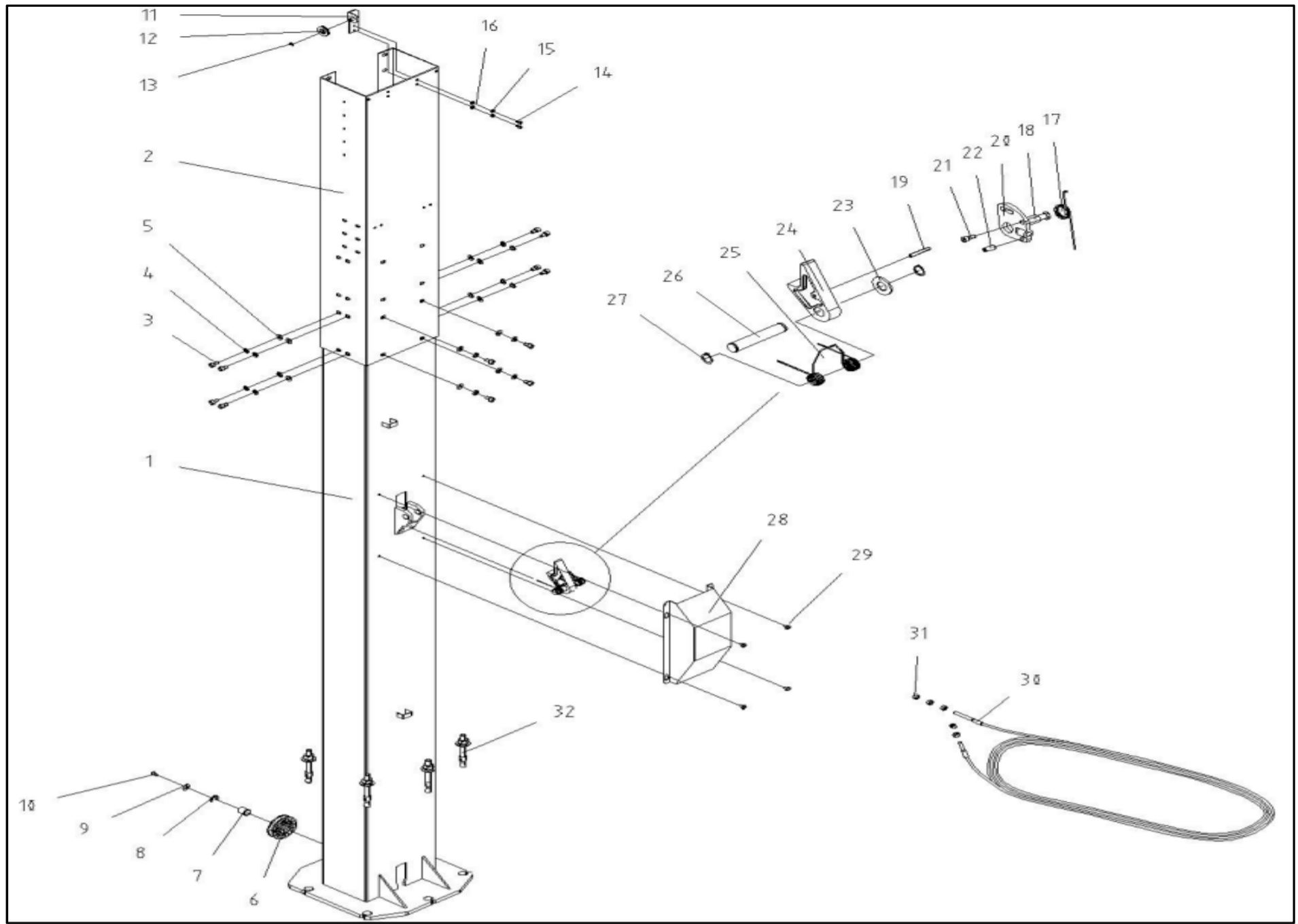
번호	품명(한글)	품명(영문)	수량	품번	비고및변경사유
NO.	PART NAME 총조립품(수동-LEVER타입)	PART NAME	Q'TY	ITEM NO.	NOTE
33	렌치볼트	WRENCH BOLT	1	WBM0615	
34	무두렌치볼트	SET SCREW	1	MWBM0820	
35	록커해제와이어지지봉	SUPPORT BAR	1	26K06090	
36	록커해제판지지스프링	SUPPORT SPRING	1	26K06130	
37	록커해제레버	HANDLE LEVEL	1	26K70140	
38	플라스틱볼손잡이	BALL HANDLE	1	PHANDLE32M10	
39	록커보호커버	LOCK COVER	1	26K06185	
40	트러스머리십자볼트	TRUSS HEAD BOLT	8	TRTBM0608	
41	컨트롤박스조립품(수동)	CONTROL BOX ASS'Y	1	26K06900	
42	컨트롤패널상판	CONTROL PANEL UPPER COVER	1	DS-AG-1417U	
43	컨트롤패널하판	CONTROL PANEL BODY	1	DS-AG-1417L	
44	케이블록커	CABLE LOCKER(^26)	2	NEC-01-20A	
45	컨트롤패널속판	ELECTRIC PARTS PLATE	1	26K07010	
46	마그네트S/W	MAGENET SWITCH	1	90000043	
47	휴즈홀더	FUSE HOLDER	2	FHG-250-1P	
48	휴즈	FUSE	2	F-250V1A	
49	둥근머리십자볼트	ROUND HEAD BOLT	4	RHCBM0408	
50	둥근머리십자볼트	ROUND HEAD BOLT	2	RHCBM0412	
51	어스플레이트	EARTH PLATE	1	42F80090	
52	파이롯트램프(녹색)	PILOT LAMP(GREEN)	1	PL1622G	
53	캠스위치	CAM SWITCH	1	90000150	
54	누름버튼스위치 백색	PUSH BUTTON SWITCH(WHITE)	1	KP5BRRFW10S	
55	와이어시브	WIRE SIEVE	1	26K06165	
56	DU베어링	DU BEARING	1	DU2025	
57	E-링	E-RING	1	SN-E15	
58	평와샤	PLAIN WASHER	1	WPM123T	
59	접시머리렌치볼트	C'SINK WRENCH BOLT	1	WBDM0815	
60	웨지앙카볼트	WEDGE ANCHOR BOLT	5	ANCW-16-145	
61	와이어로프	WIRE ROPE	1	26K06010	
62	육각너트	HEX NUT	6	HNM12	
63	록커해제와이어로프	LOCK WIRE ROPE	1	26K70130	
64	유압호스조립품	HYDRAULIC HOSE ASS'Y	1	26K01__	



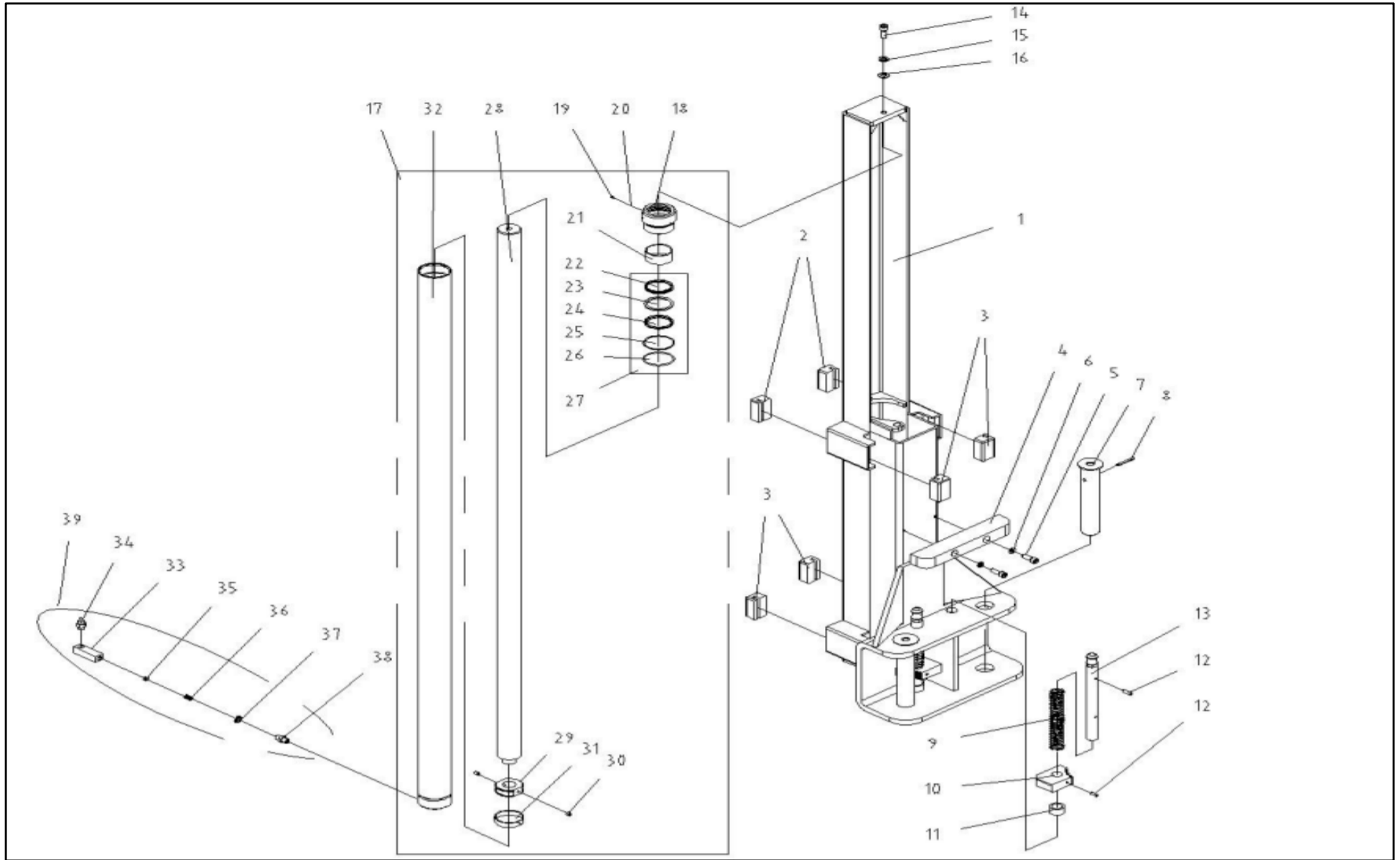
번호	품명(한글)	품명(영문)	수량	품번	비고및변경사유
NO.	PART NAME 총조립품(수동-LEVER타입)	PART NAME	Q'TY	ITEM NO.	NOTE
65	3방향니플	3-WAY STEEL NIPPLE	1	26K01040	
66	유압호스(종동용)	HYDRAULIC HOSE(SLAVE POST)	1	26K70120	
67	유압호스(파워팩용)	HYDRAULIC HOSE(POWER PACK)	1	26K01020	
68	유압호스(구동용)	HYDRAULIC HOSE(MAIN POST)	1	26K01030	
69	트랜스포머조립품(50VA)	TRANSFORMER SET(50VA)	1	26K08800	
70	트랜스포머조립품(100VA)	TRANSFORMER SET(100VA)	1	26K06600	
71	트랜스포머받침대(50VA)	TRANSFORMER BASE(50VA)	1	25E76100	
72	트랜스포머받침대(100VA)	TRANSFORMER BASE(100VA)	1	26K08210	
73	트랜스포머(50VA)	TRANSFORMER(50VA)	1	25E76300	
74	트랜스포머(100VA)	TRANSFORMER(100VA)	1	TR41550100	
75	트랜스포머카바(50VA)	TRANSFORMER COVER(50VA)	1	25E76200	
76	트랜스포머카바(100VA)	TRANSFORMER COVER(100VA)	1	26K08220	
77	케이블록커	CABLE LOCKER	1	JOKW-21	
78	트러스머리탭핑볼트	TRUSS HEAD TAPPING BOLT	8	TRTBM0513	
79	트러스머리십자볼트	TRUSS HEAD BOLT	4	TRTBM0608	



번호	품명(한글)	품명(영문)	수량	품번
NO.	PART NAME 총조립품(수동-LEVER타입)	PART NAME	Q'TY	ITEM NO.
1	중동기둥	POST	1	26K13100
2	연결기둥	POST EXTENSION	1	26K80110
3	렌치볼트	WRENCH BOLT	12	WBM1015W
4	스프링와샤	SPRING WASHER	12	WSM10
5	평와샤	PLAIN WASHER	12	WPM1003
6	와이어시브	WIRE SIEVE	1	26K06165
7	DU베어링	DU BEARING	1	DU2025
8	E-링	E-RING	1	SN-E15
9	평와샤	PLAIN WASHER	1	WPM12
10	접시머리렌치볼트	C'SINK WRENCH BOLT	1	WBDM0815
11	록커와이어시브상부브라켓	ROCKER WIRE SIEVE BRACKET	1	26K06510
12	록커와이어시브	ROCKER WIRE SIEVE	2	26K06120
13	E-링	E-RING	2	SN-E08
14	렌치볼트	WRENCH BOLT	2	WBM0610
15	스프링와샤	SPRING WASHER	2	WSM06
16	평와샤	PLAIN WASHER	2	WPM06
17	록커해제판지지스프링	SUPPORT SPRING	1	26K06130
18	록커해제와이어지지봉	SUPPORT BAR	1	26K06090
19	스프링핀	SPRING PIN	1	SPIN0640
20	록커레버고정판주조품	LEVER BODY	1	26K06086
21	렌치볼트	WRENCH BOLT	1	WBM0615
22	무두렌치볼트	SET SCREW	1	MWBM0820
23	평와샤	PLAIN WASHER	1	WPM20
24	록커주조품	LOCK BLOCK	1	26K06111
25	록커지지스프링	LOCK SPRING	1	26K06140

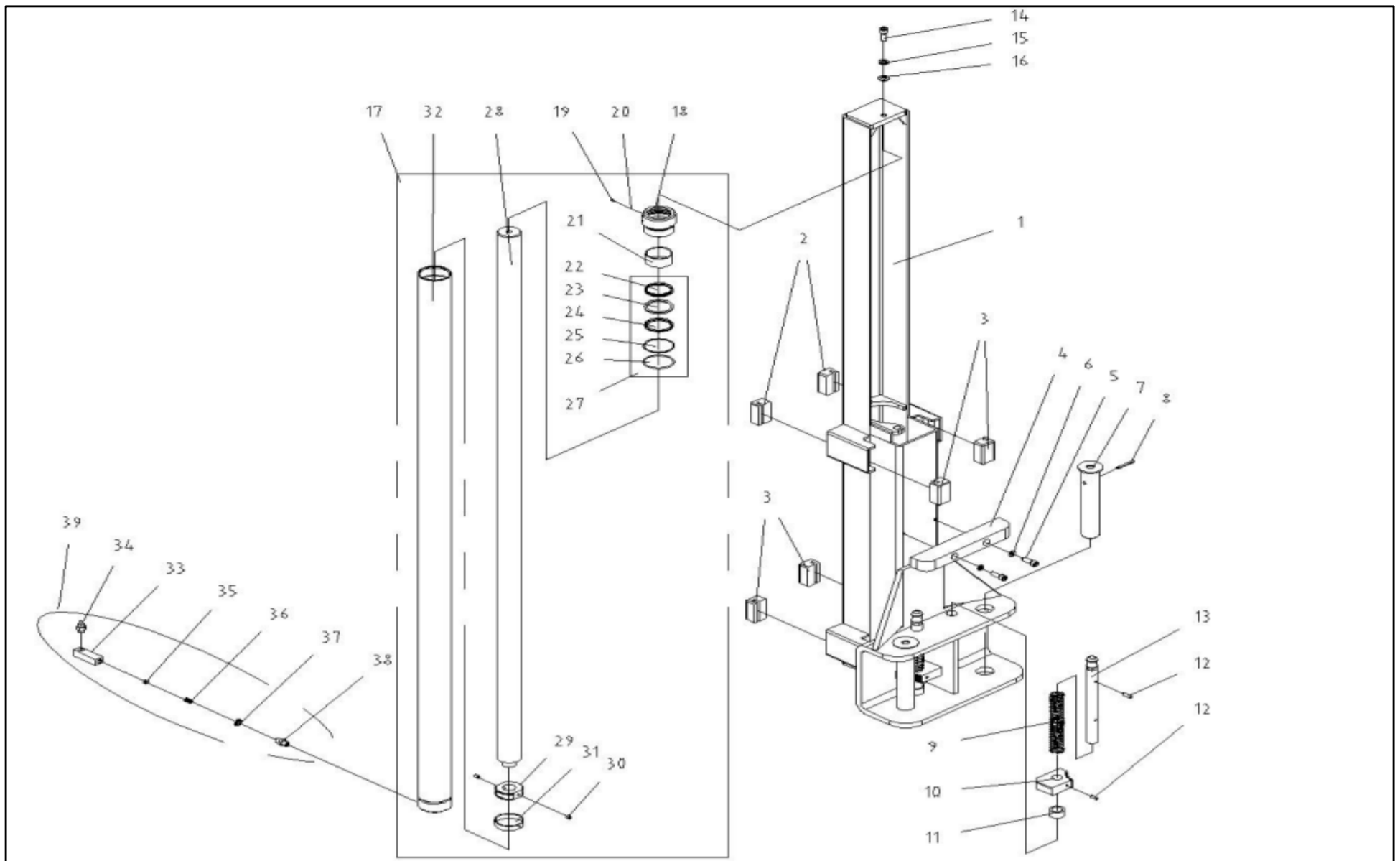


번호	품명(한글)	품명(영문)	수량	품번
NO.	PART NAME 총조립품(수동-LEVER타입)	PART NAME	Q'TY	ITEM NO.
26	록커축	LOCK SHAFT	1	26K06100
27	스냅링	CIRCLIP	2	SN-CS20
28	록커보호커버	LOCK COVER	1	26K06195
29	트러스머리십자볼트	TRUSS HEAD BOLT	4	TRTBM0608
30	와이어로프	WIRE ROPE	1	26K06010
31	육각너트	HEX NUT	6	HNM12
32	웨지앵카볼트	WEDGE ANCHOR BOLT	5	ANCW-16-145

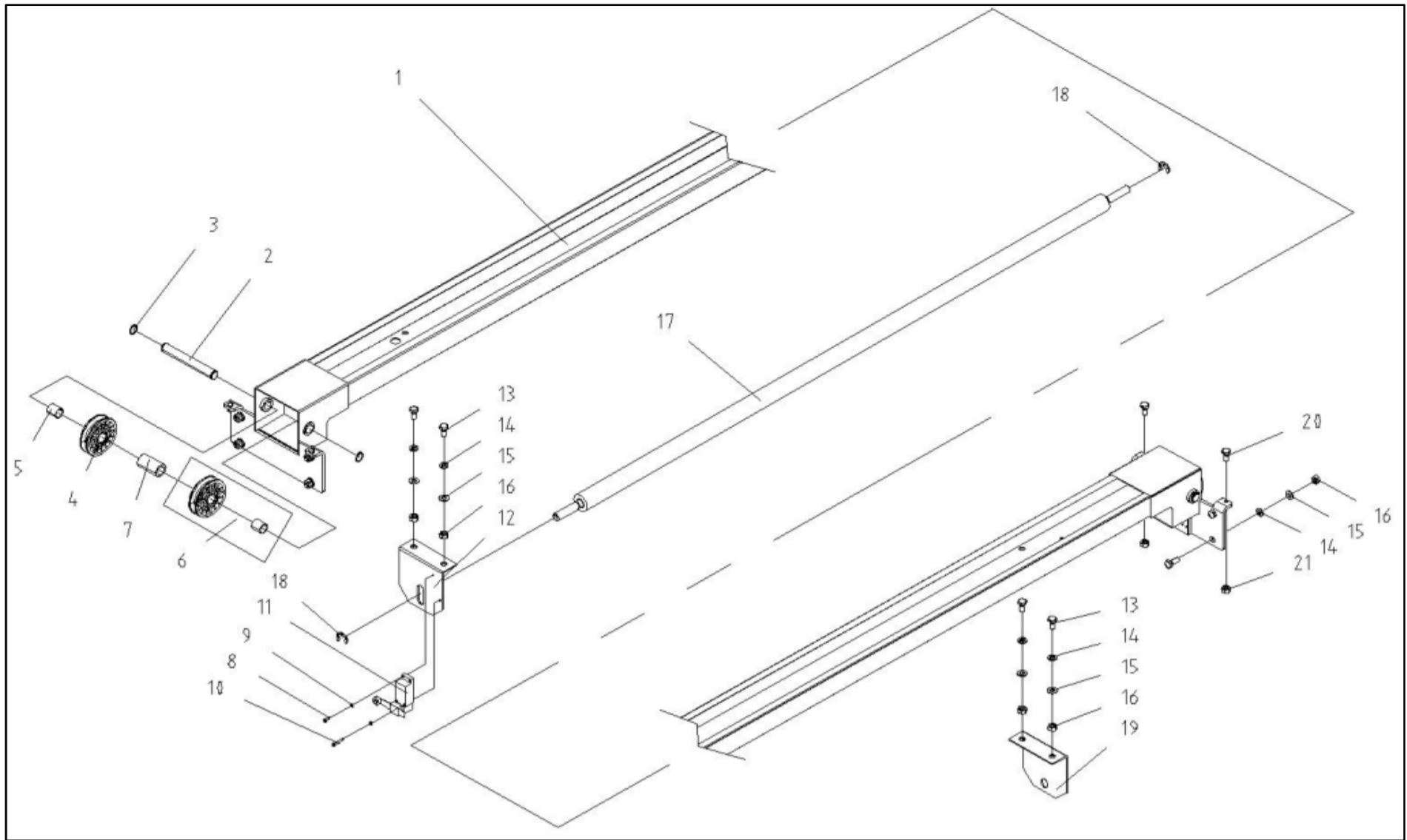


번호	품명(한글)	품명(영문)	수량	품번	비고및변경사유
NO.	PART NAME 총조립품(수동-LEVER타입)	PART NAME	Q'TY	ITEM NO.	NOTE
1	캐리제관품	CARRIAGE	2	26C05000	
2	캐리가이드-HDPE	CARRIAGE GUIDE(HDPE)	8	26C06070	
3	캐리가이드-UHMW-PE	CARRIAGE GUIDE(UHMW-PE)	8	26C06060	
4	도어보호고무판	DOOR SAFETY RUBBER PAD	2	26M70010	
5	렌치볼트	WRENCH BOLT	4	WBM0830	
6	평와샤	PLAIN WASHER	4	WPM08	
7	아암축	ARM SHAFT	4	26K70111	
8	스프링핀	SPRING PIN	4	SPIN0650W	
9	아암록커스프링	ARM LOCK SPRING	4	26K06050	
10	아암록커작은기어	SMALL ARM LOCK GEAR	4	26K06040	
11	아암록커카라	ARM LOCK SPACER	4	27M62220	
12	스프링핀	SPRING PIN	8	SPIN0620	
13	아암록커축	ARM LOCKER SHAFT	4	26M06030	
14	렌치볼트(H)	WRENCH BOLT(H)	2	WBHM1240	
15	스프링와샤(H)	SPRING WASHER(H)	2	WSHM10	
16	평와샤	PLAIN WASHER	2	WPM10	
17	실린더조립품	CYLINDER ASS'Y	2	26K05000	
18	헤드카바	HEAD COVER	2	26D55050	
19	무두렌치볼트	LOCKING BOLT	2	MWBM0604	
20	강구	STEEL BALL	2	BALL-3/16"	
21	DU베어링	DU BEARING	2	DU4530	
22	더스트시일	DUST SEAL	2	DHS455305	
23	백업링	BACK UP RING	2	ORP455503B	
24	U-팩킹	U-PACKING	2	UHS45556	
25	백업링	BACK UP RING	2	ORP6560125B	
26	O-링	O-RING	2	ORG60	
27	헤드카바팩킹류	HEAD COVER PACKING	2	26E95100	
28	로드봉	ROD BAR	2	26D55020	
29	피스톤	PISTON	2	26D55040	
30	무두렌치볼트	LOCKING BOLT	4	MWBM0608	
31	웨어링	WEAR RING	2	WEAR605515	
32	호닝파이프	HONING PIPE	2	26D55010	

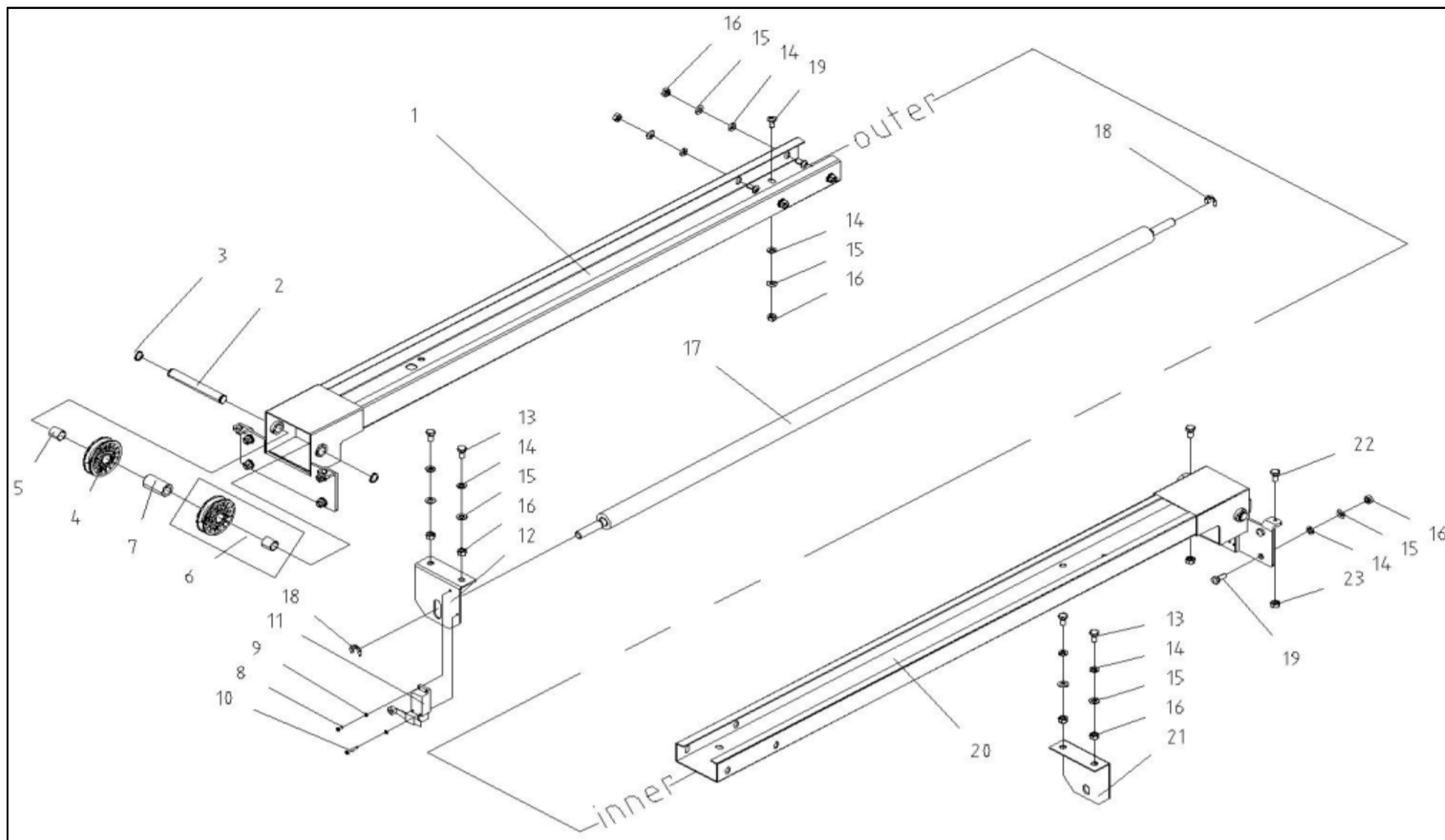




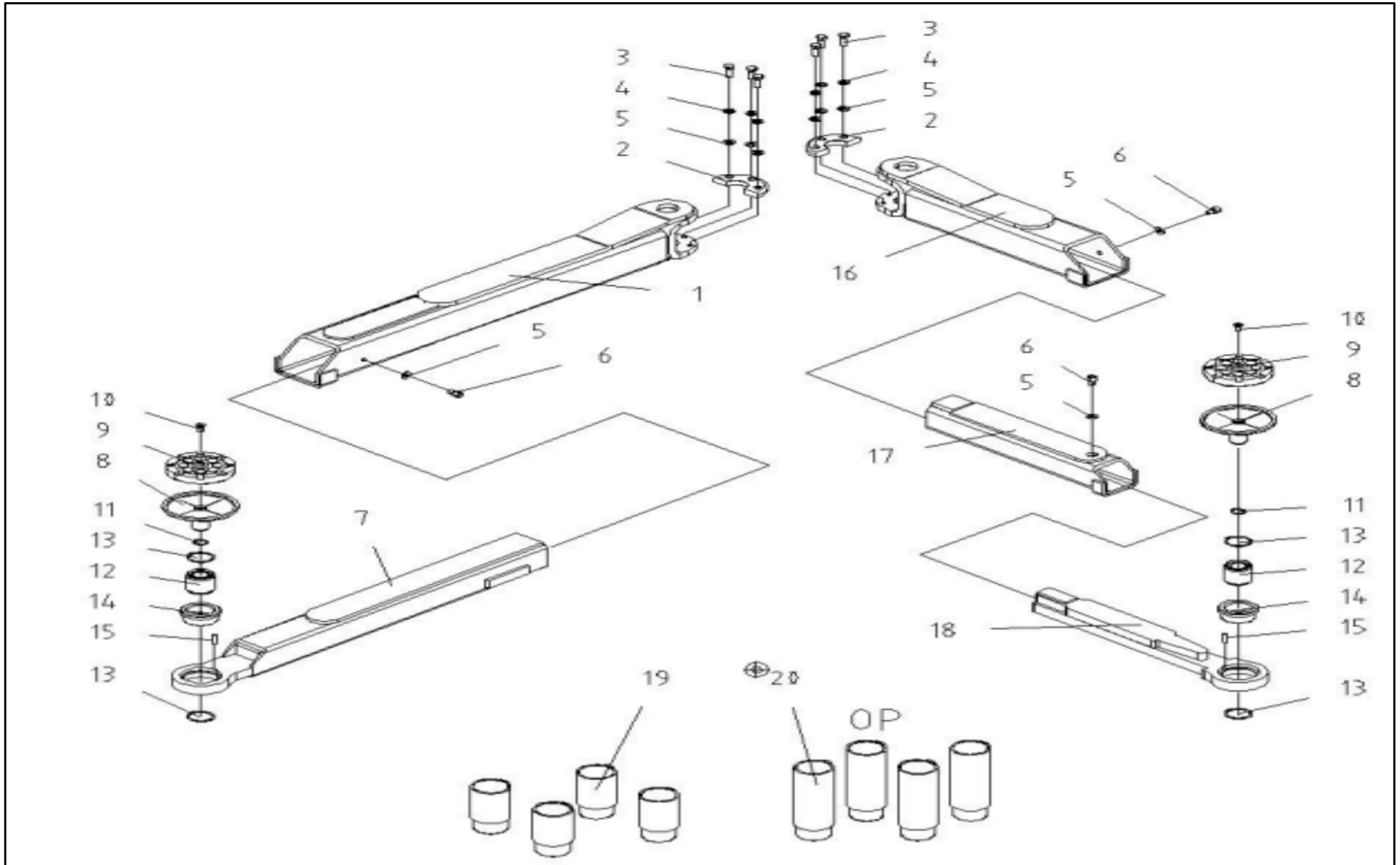
번호	품명(한글)	품명(영문)	수량	품번	비고및변경사유
NO.	PART NAME 총조립품(수동-LEVER타입)	PART NAME	Q'TY	ITEM NO.	NOTE
33	유압호스아답타	HYDRAULIC HOSE ADAPTOR	2	26M06020	
34	철니플	STEEL NIPPLE(ST.)	2	HMCM-1/4-05U	
35	오리피스	ORIFICE	2	26K06180	
36	오리피스스프링	ORIFICE SPRING	2	31S71203	
37	오리피스가이드	ORIFICE SPACER	2	52F71205	
38	철니플	STEEL NIPPLE(ST.)	2	HMCM-1/4-1/4S	
39	유압호스아답타조립품	HYDRAULIC HOSE ADAPTOR ASS'Y	2	26K06018	



번호	품명(한글)	품명(영문)	수량	품번	비고및변경사유
NO.	PART NAME 총조립품(수동-LEVER타입)	PART NAME	Q'TY	ITEM NO.	NOTE
1	상부지지빔제관품(국내)	CROSS BEAM(DOMESTIC)	1	26K42000	
2	상부와이어시브축	WIRE SIEVE SHAFT	2	26K40010	
3	스냅링	CIRCLIP	4	SN-CS20W	
4	와이어시브	WIRE SIEVE	4	26K06165	
5	DU베어링	DU BEARING	4	DU2025	
6	와이어시브조립품	WIRE SIEVE	4	26K06160	
7	상부와이어시브카라	WIRE SIEVE SPACER	2	26M40510	
8	둥근머리십자볼트	ROUND HEAD BOLT	1	RHCBM0412	
9	스프링와샤	SPRING WASHER	2	WSM04	
10	둥근머리십자볼트	ROUND HEAD BOLT	1	RHCBM0430	
11	리미트스위치	LIMIT SWITCH	1	RME-8108	
12	상부안전봉홀더	TOP SAFETY BAR BREACKET	1	26K40310	
13	육각볼트	HEX BOLT	4	HEXM1020	
14	스프링와샤	HEXM1020	18	WSM10	
15	평와샤	PLAIN WASHER	18	WPM10	
16	육각너트	HEX NUT	18	HNM10	
17	상부안전봉	UPPER SAFETY BAR	1	26K40200	
18	E-링	E-RING	2	SN-E15	
19	상부안전봉고정대	TOP SAFETY BAR BREACKET	1	26K40410	
20	육각볼트	HEX BOLT	4	HEXM0625	
21	육각너트	HEX NUT	4	HNM06	



번호	품명(한글)	품명(영문)	수량	품번	비고및변경사유
NO.	PART NAME 총조립품(수동-LEVER타입)	PART NAME	Q'TY	ITEM NO.	NOTE
1	상부지지빔메인판(1)	CROSS BEAM(1)	1	26K76300	
2	상부와이어시브축	WIRE SIEVE SHAFT	2	26K40010	
3	스냅링	CIRCLIP	4	SN-CS20W	
4	와이어시브	WIRE SIEVE	4	26K06165	
5	DU베어링	DU BEARING	4	DU2025	
6	와이어시브조립품	WIRE SIEVE	4	26K06160	
7	상부와이어시브카라	WIRE SIEVE SPACER	2	26M40510	
8	둥근머리십자볼트	ROUND HEAD BOLT	1	RHCBM0412	
9	스프링와샤	SPRING WASHER	2	WSM04	
10	둥근머리십자볼트	ROUND HEAD BOLT	1	RHCBM0430	
11	리미트스위치	LIMIT SWITCH	1	RME-8108	
12	상부안전봉홀더	TOP SAFETY BAR BREACKET	1	26K40310	
13	육각볼트	HEX BOLT	4	HEXM1020	
14	스프링와샤	HEXM1020	18	WSM10	
15	평와샤	PLAIN WASHER	18	WPM10	
16	육각너트	HEX NUT	18	HNM10	
17	상부안전봉	UPPER SAFETY BAR	1	26K40200	
18	E-링	E-RING	2	SN-E15	
19	육각볼트	HEX BOLT	8	HEXM1025	
20	상부지지빔메인판(2)	CROSS BEAM(2)	1	26K76500	
21	상부안전봉고정대	TOP SAFETY BAR BREACKET	1	26K40410	
22	육각볼트	HEX BOLT	4	HEXM0625	
23	육각너트	HEX NUT	4	HNM06	



번호	품명(한글)	품명(영문)	수량	품번	비고및변경사유
NO.	PART NAME 총조립품(수동-LEVER타입)	PART NAME	Q'TY	ITEM NO.	NOTE
1	긴아암제관품	LONG ARM	2	26C22000	
2	아암록커큰기어	LARGE ARM LOCK GEAR	4	26K25040	
3	육각볼트(H)	HEX BOLT(H)	12	HEXHM1030	
4	스프링와샤	SPRING WASHER	12	WSHM10	
5	평와샤	PLAIN WASHER	18	WPM10	
6	둥근머리렌치볼트	ROUND HEADED H BOLT	6	WRBM1015	
7	긴슬라이드아암제관품	LONG SLIDE ARM	2	26K24100	
8	조정고무받침대(H)제관품	ARM SUPPORTER	4	26K25010	
9	조정고무판	ARM SUPPORT RUBBER	4	25J25030	
10	접시머리렌치볼트(H)	SINK WRENCH BOLT(H)	4	WBDHM0820W	
11	스냅링	CIRCLIP	4	SN-CS25	
12	조정볼트2단	ARM 2ND SUPPORTER	4	25J25020	
13	스냅링	CIRCLIP	8	SN-CS45	
14	조정볼트아답타	ADJ BOLT ADAPTOR	4	26D80110	
15	스프링핀	SPRING PIN	4	SPIN0630	
16	짧은아암제관품	SHORT ARM	2	26C33000	
17	짧은슬라이드아암제관품	SHORT SLIDE ARM	2	26C34000	
18	3단아암제관품	3RD SLIDE ARM	2	26K36100	
19	조정볼트아답타2단(1)	HEIGHT BOLT 2ND-1	4	26D80120	
20	조정볼트아답타2단(2)-옵션	HEIGHT BOLT 2ND-2(OP)	4	26D80130	