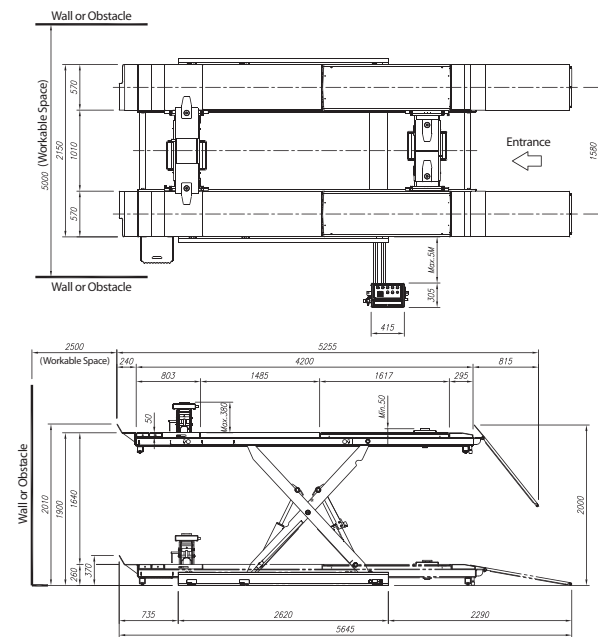
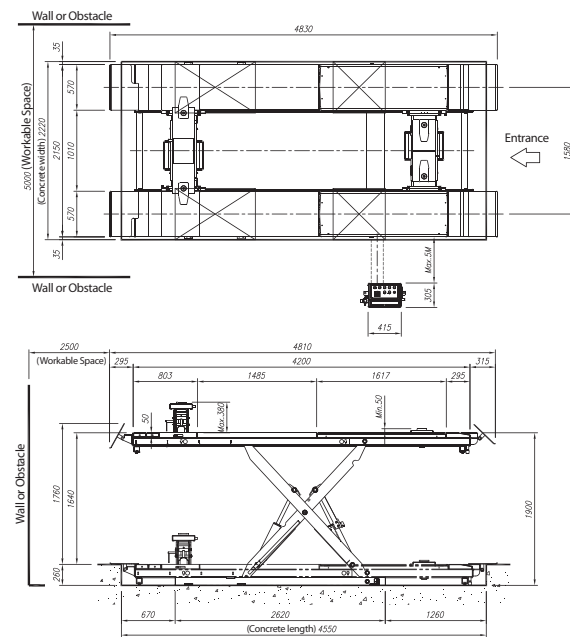


>>LAYOUT

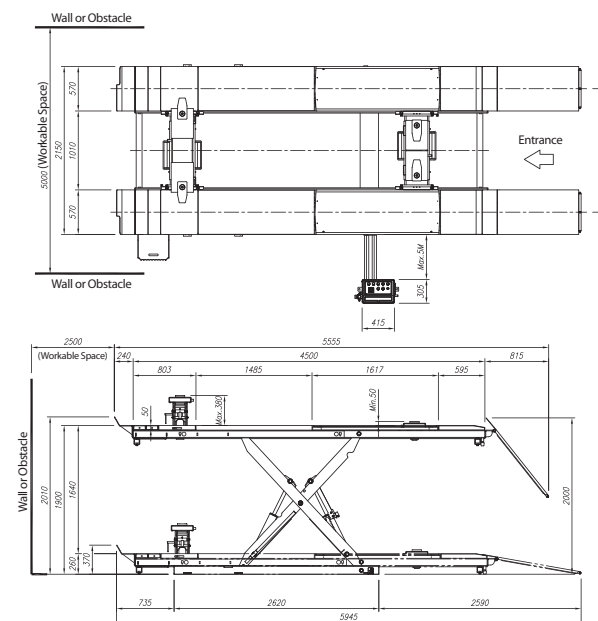
HL-52X On ground



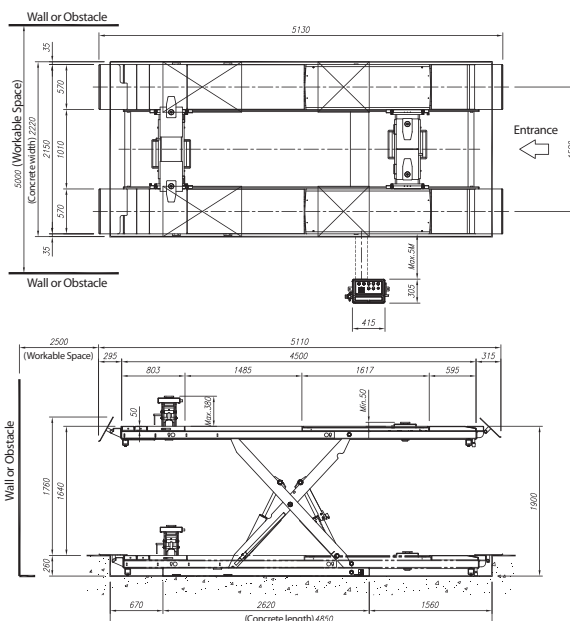
HL-52X In ground



HL-53X On ground



HL-53X In ground



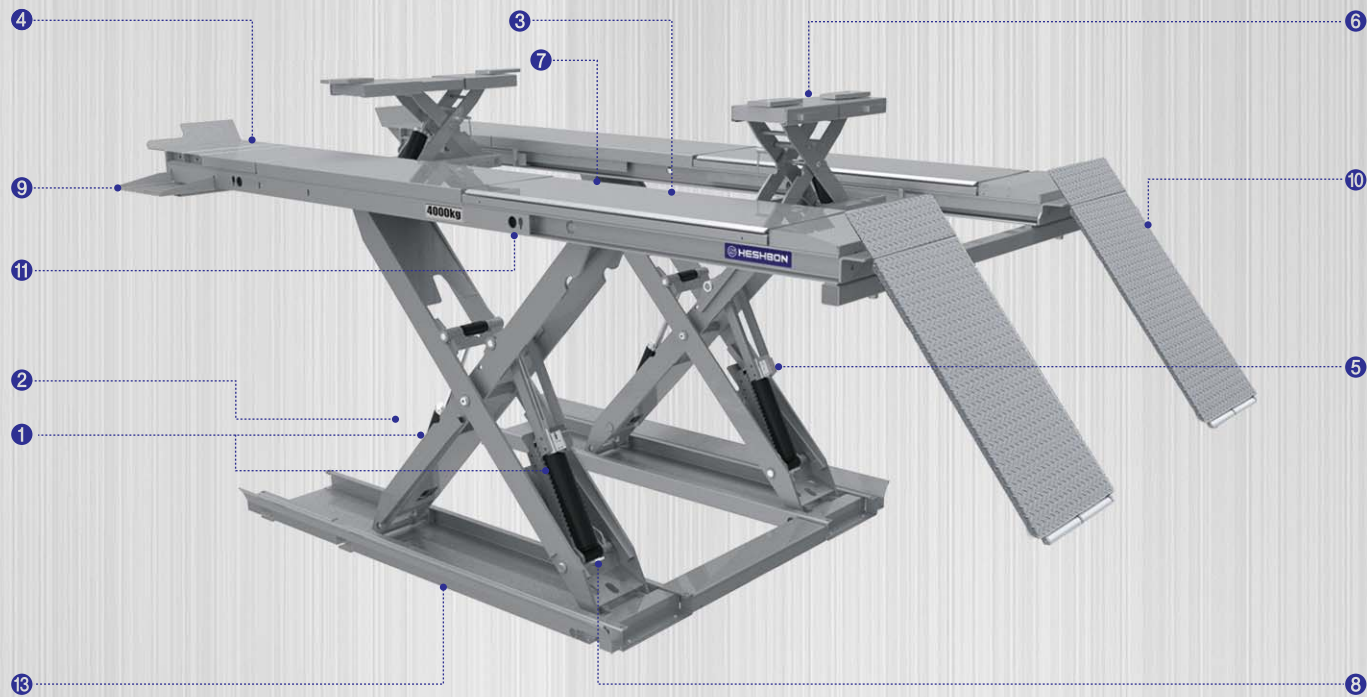
>>Specification

Lifting Capacity	Main Lift : 4,000 Kg / Aux.Lift : 2,000 Kg
Max. Hydraulic Pressure	240 Kgf/cm ²
Max. Lifting Height	Main Lift : 1,900 mm / Aux.Lift : 530 mm
Min. Lifting Height	Main Lift : 260 mm / Aux.Lift : 200 mm
Stroke	Main Lift : 1,640 mm / Aux.Lift : 330 mm
Ascending time	Main Lift : 40 ~ 60 sec. / Aux.Lift : 5 ~ 15 sec.
Descending time	Main Lift : 35 ~ 45 sec. / Aux. Lift : 10 ~ 30 sec.
Power supply	1PH : 2.5HP x 4P x 220V x 50/60Hz 3PH : 3HP x 4P x 220/380V x 50/60Hz
Weight	About 2,100 kg (HL-52X) / 2,150 kg (HL-53X)
Dimension	HL-52X : 5,645 X 2,150 X 2,010 mm / HL-53X : 5,945 X 2,150 X 2,010 mm

WHEEL ALIGNMENT SCISSOR LIFT



HL-52X / 4ton
HL-53X / 4ton



1 Accurate synchronization method
Realized accurate synchronization method through Master-Slave cylinder.



2 Comfortable operation flow
Structure of no obstacle on runway allows workers for more convenient access around the lift.



3 Side Slip
Available to set with variable vehicles by applying adjustable front turntable for wheel alignment operation.



4 Adjustable Front Turntable
Available to set with variable vehicles by applying adjustable front turntable for wheel alignment operation.



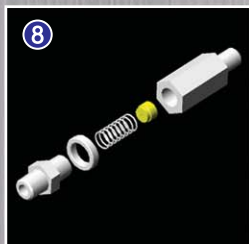
5 Robust and durable Locker
2 strong and reinforced lockers provides more safety to use lift



6 Jack Lifts mounted
Two auxiliary jacks are applied for usability.



7 Jack Switch attached
Jack switch which inside of runway applied for reduce damage of lift and safe operation.



8 Orifice applied
Orifice (hydraulic safety circuit) is applied to maintain stable descending speed even if hydraulic hose is damaged.



9 Step aid plate
Removable step aid plate is applied for usability of workers.



10 One body ramp
Ramp is composed as one body type with platform which enables workers to use space efficiently.



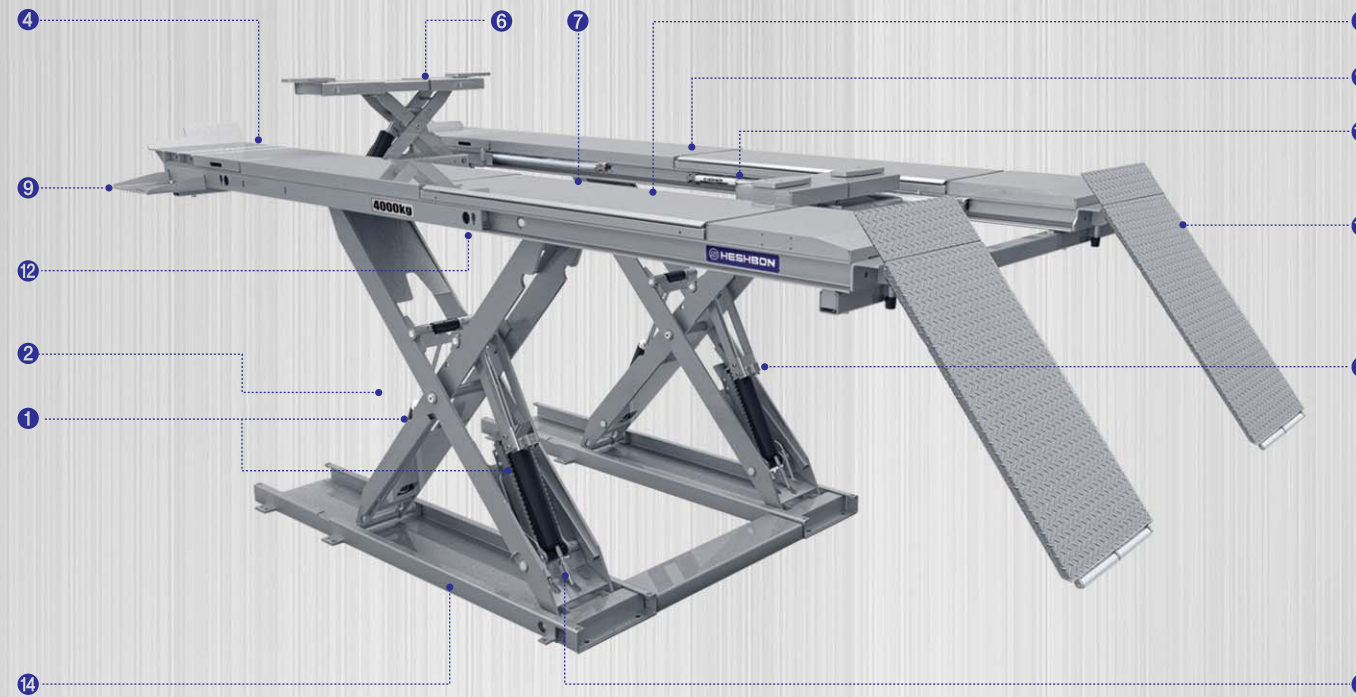
11 Alignment Cable duct
Duct is provided for sensor connection of wheel alignment at the side of runway.



12 Exclusive 3D wheel alignment
Stable structure and convenient features for 3D wheel alignment.



13 Foot Protection Guide
Foot protection guide applied for safety of workers when the lift descend.



1 Accurate synchronization method
Realized accurate synchronization method through Master-Slave cylinder.



2 Comfortable operation flow
Structure of no obstacle on runway allows workers for more convenient access around the lift.



3 Side Slip
Available to set with variable vehicles by applying adjustable front turntable for wheel alignment operation.



4 Adjustable Front Turntable
Available to set with variable vehicles by applying adjustable front turntable for wheel alignment operation.



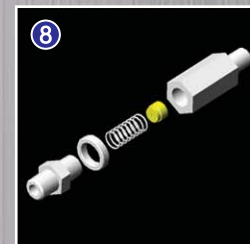
5 Robust and durable Locking Sensor
2 strong and reinforced lockers and locking sensors will provides more safety to use the lift.



6 Jack Lifts mounted
Two auxiliary jacks are applied for usability.



7 Jack Switch attached
Jack switch which inside of runway applied for reduce damage of lift and safe operation.



8 Orifice applied
Orifice (hydraulic safety circuit) is applied to maintain stable descending speed even if hydraulic hose is damaged.



9 Step aid plate
Removable step aid plate is applied for usability of workers.



10 One body ramp
Ramp is composed as one body type with platform which enables workers to use space efficiently.



11 Advantages of 4500mm runway
A long platform is suitable for 3D wheel alignment, and enable to handle varies vehicles such as small cars, passenger cars and vans.



12 Alignment Cable duct
Duct is provided for sensor connection of wheel alignment at the side of runway.



13 Exclusive 3D wheel alignment
Stable structure and convenient features for 3D wheel alignment.



14 Two step descending system
The equipment with safety device that lock the lift during descent at 150mm above ground and then descend continually for safety of workers.



15 Lighting Kit
Light enables workers to work safely under the lift.